

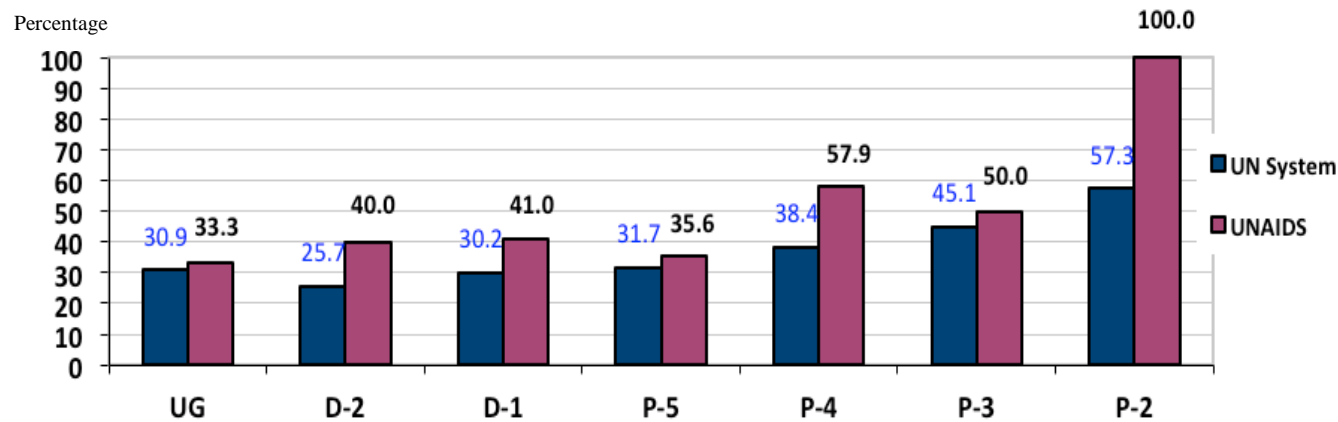


The Status of Women in the United Nations System and UNAIDS

(from 1 January 2001 to 31 December 2010)

THE UNITED NATIONS SYSTEM	UNAIDS
<i>Gender distribution of staff in the Professional and higher categories</i>	

Percentage comparison of women in the professional and higher categories with appointments of one year or more in the United Nations system and UNAIDS
December 2010



*Source: CEB Table 11 –31 December 2010

*30 of 31 entities submitted data

**UG stands for “Ungraded” and combines the ranks of Secretary-General, Under-Secretary-General, Assistant Secretary-General, Director-General, Deputy Director-General and Assistant Director-General

As of 31 December 2010, women **in the UN system** constituted:

- **40.3%** (12,005 out of 29,763) of all staff in the professional and higher categories with appointments of one year or more (UG-P2)
- **29.3%** (784 out of 2,674) of all staff at the **D-1 level and above**(UG-D1)
- **41.4%** (11,221 out of 27,089) of all staff at the **P level**(P5-P2)

Gender balance has only been achieved at the **P-2 level(57.3%)**.

*Source: CEB Table 11 –31 December 2010

As of 31 December 2010, women **in UNAIDS** constituted:

- **46.2%** (163 out of 353) of all staff in the professional and higher categories with appointments of one year or more (UG-P2)
- **40.4%** (21 out of 52) of all staff at the **D-1 level and above**(UG-D1)
- **47.2%** (142 out of 301) of all staff at the **P level** (P5-P2)

Gender balance has only been achieved or exceeded at P4level(57.9%),P3level(50.0%), P2level (100.0%).

*Source: CEB Table 11 –31 December 2010

Trends in the representation of women in the Professional and higher categories – 2001 to 2010

Largest increase: UG (15.2 percentage points from 15.6% in Dec 2001 to 30.9% in Dec 2010)

Smallest increase: P-2 (4.0 percentage points from 53.3% in Dec 2001 to 57.3% in Dec 2010)

Largest increase: UG(33.3 percentage points from 0.0% in Dec. 2001 to 33.3% in Dec. 2010)

Largest decrease: P3(-10.0 percentage points from 60.0% in Dec 2001 to 50.0% in Dec 2010)

Level	% of women as of 31 Dec 2001	% of women as of 31 Dec 2010	Total change 2001-2010 (percentage points)	Average annual change 2001-2010 (percentage points)
UG	15.6	30.9	15.2	1.5
D-2	20.8	25.7	4.8	0.5
D-1	21.3	30.2	8.9	0.9
P-5	24.1	31.7	7.6	0.8
P-4	31.3	38.4	7.1	0.7
P-3	40.3	45.1	4.8	0.5
P-2	53.3	57.3	4.0	0.0
P-1	-	-	-	-

Level	% of women as of 31 Dec 2001	% of women as of 31 Dec 2010	Total change 2001-2010 (percentage points)	Average annual change 2001-2010 (percentage points)
UG	0.0	33.3	33.3	3.3
D-2	33.3	40.0	6.7	0.7
D-1	33.3	41.0	7.7	0.8
P-5	31.2	35.6	4.4	0.4
P-4	34.6	57.9	23.2	2.3
P-3	60.0	50.0	-10.0	-0.1
P-2	84.2	100.0	15.8	1.6
P-1	-	-	-	-

*Source: CEB Table 11 – 31 December 2001 and 31 December 2010